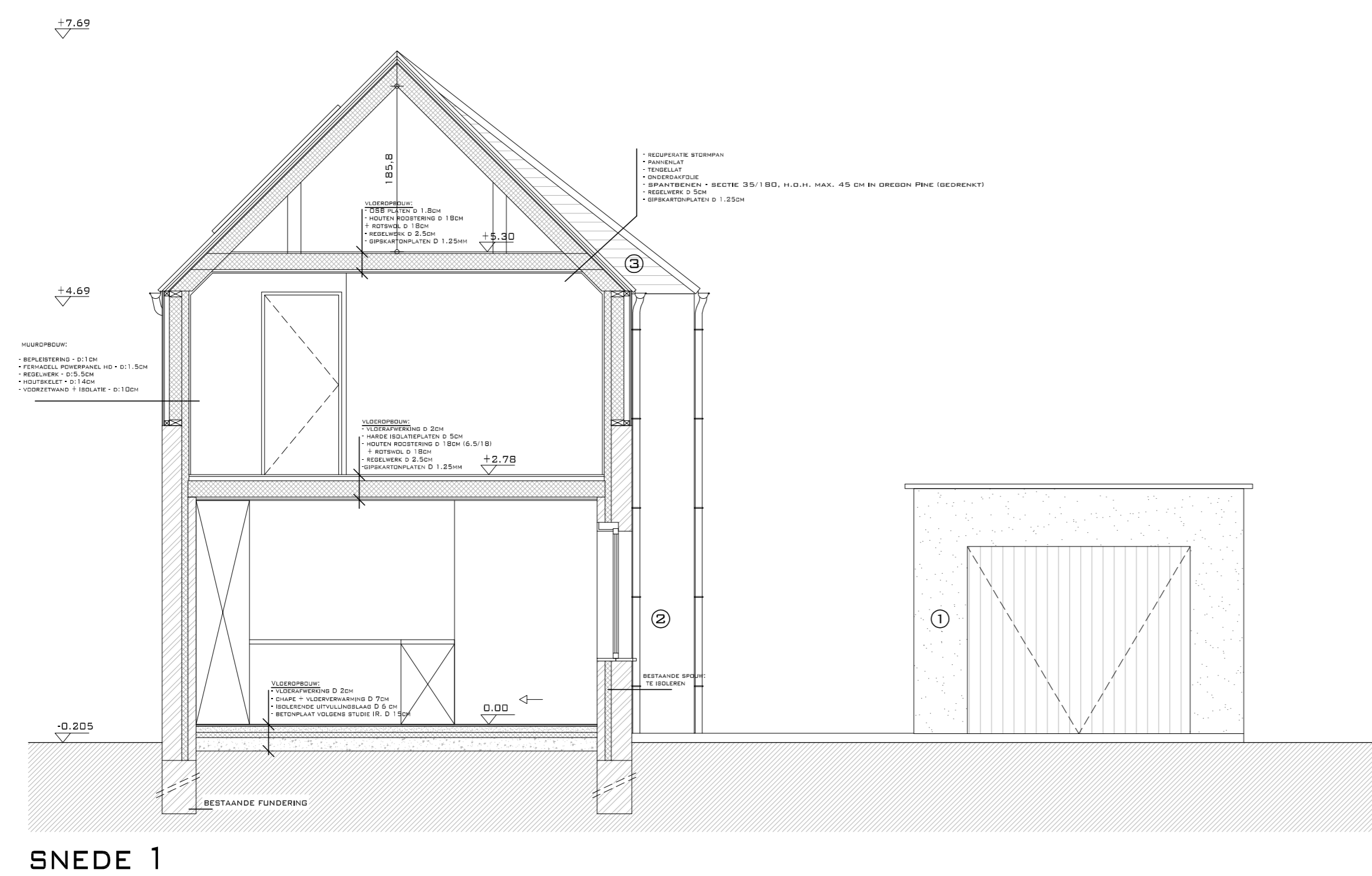
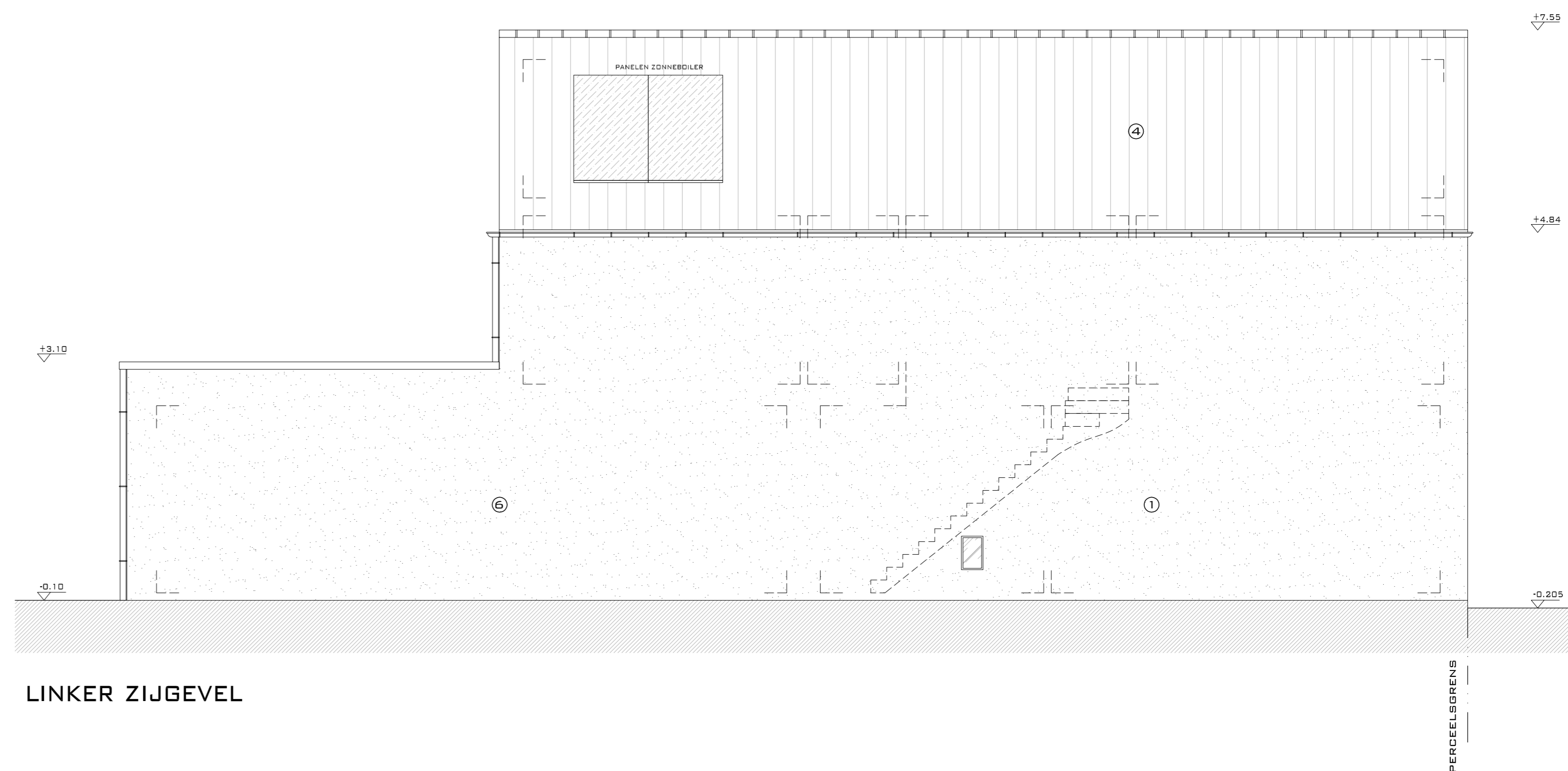
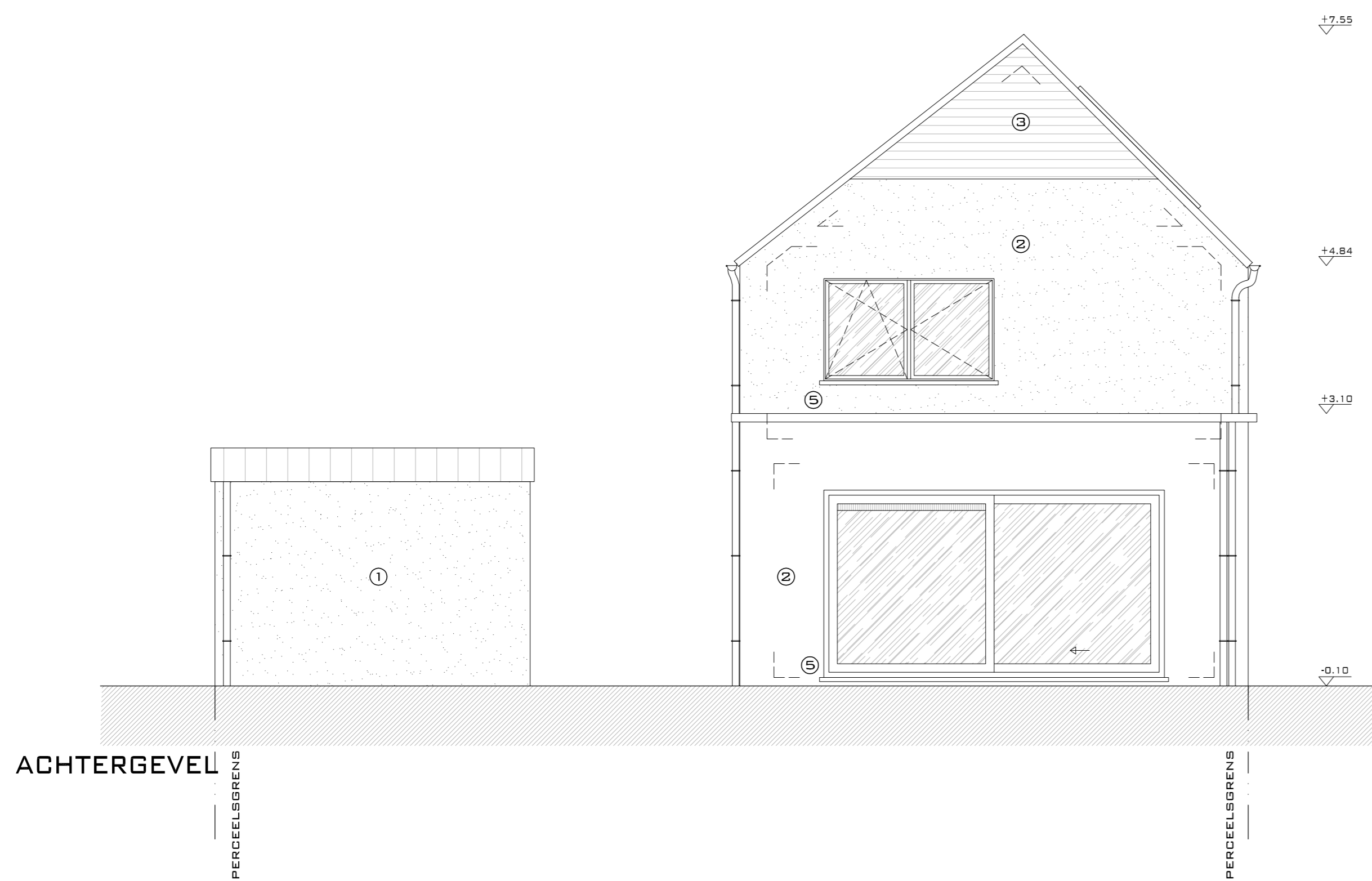
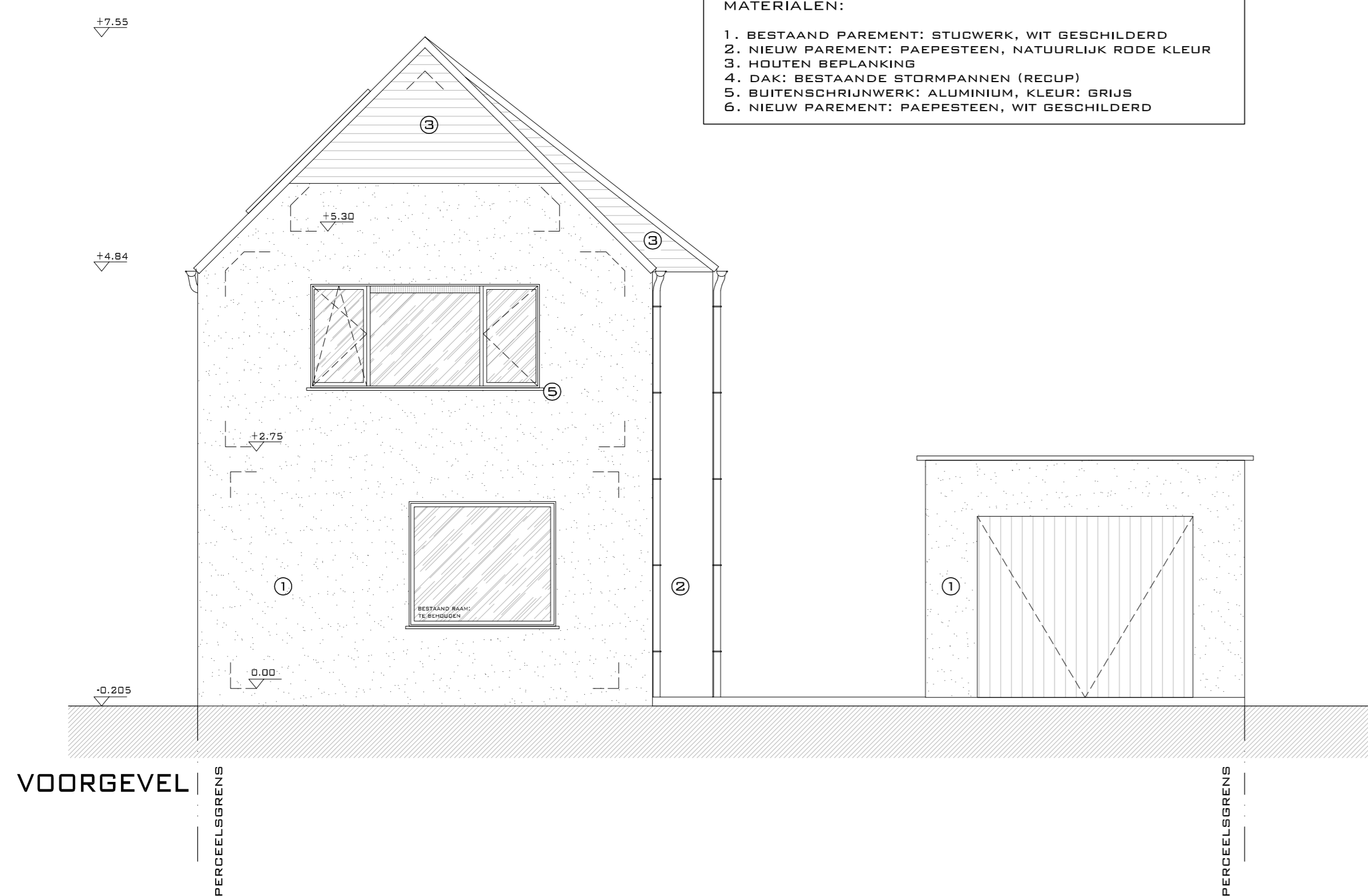


- MATERIALEN:**
1. BESTAAND PAREMENT: STUWERK, WIT GESCHILDERD
 2. NIEUW PAREMENT: PAAPESTEEN, NATUURLIJK RODE KLEUR
 3. HOUTEN BEPLANKING
 4. DAK: BESTAANDE STORMPANNEN (REGUP)
 5. BUITENSCHRIJNWERK: ALUMINIUM, KLEUR: GRIJS
 6. NIEUW PAREMENT: PAAPESTEEN, WIT GESCHILDERD



SNEDE 1